



# Durham Comprehensive Plan Project Update

December 7, 2021  
InterNeighborhood Council Meeting

# Current Engagement

- **Engagement Ambassadors:** Ambassador-led sessions where folks can focus on areas that might change significantly over time and impact residents
- **Resident Engagement Toolkit:** A downloadable toolkit where volunteers can gather input from residents in existing spaces or gatherings and/or help folks engage digitally
- **Community Meetings:** A series of 6 virtual staff-led meetings to share information about the Place Types, learn about how to use the online tools, and where to find the Resident Engagement Toolkit
- **Community-Wide Digital Engagement:** The online spaces for unguided engagement with an interactive map and open-ended questions

## Durham Comprehensive Plan



### WHAT IS IT?

While the name "Comprehensive Plan" might make you think that this plan can do anything and everything – there are actually a few key things that Comprehensive Plans are most effective at. The Comprehensive Plan is a **Land Use plan**, meaning that it's mainly focused on how land is used and what is built on that land.

### WHAT DOES IT DO?

The vast majority of land in Durham is privately owned, and almost all new development in Durham is built by private property owners and developers. When a property owner wants to build something new on their property, the Comprehensive Plan, along with other tools, like zoning, set guidance and regulations for how development should happen. But in most cases we are prohibited by North Carolina State Law from requiring many things our community needs, like affordable housing and rent control.



### WHY SHOULD I CARE?

A Comprehensive Plan is a unique opportunity for you to help shape the future we work towards and to help us find creative solutions to complex problems and limitations.

**The Durham that you live in today is the result of previous plans. Those plans have not included all communities in Durham and reflected only the priorities of the guiding voices at that time. We need everyone to participate in the creation of this plan to make sure it works for everyone in Durham.**

### HOW WILL MY INPUT IMPACT THE PROCESS?

When you share an idea, you are contributing directly to the Comprehensive Plan. Your ideas will serve as the foundation of the plan's goals and objectives, inform specific policies, and set the course for implementation. It is critical that community voices and feedback are reflected in the document's policies



### WHAT'S NEXT?

Residents have helped shape the **Community Goals and Objectives** for Durham and now we need to make our vision a reality. The next phases will focus on guidelines for how handle big issues like land use, environmental protection, equity, and transportation by creating policies for how Durham grows and develops.

**Help us make a better map and policies that work towards a more equitable and sustainable future!**

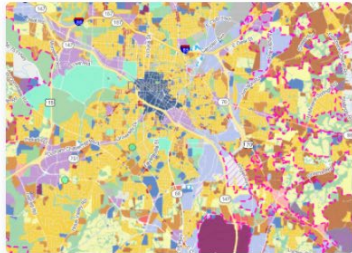
### SIGN ME UP!

Sign up for email newsletters and we'll keep you updated on upcoming meetings and major announcements. If you have any questions or ideas, share them at [EngageDurham@durhamnc.gov](mailto:EngageDurham@durhamnc.gov)

LEARN MORE AT [ENGAGEDURHAM.COM](https://engagedurham.com)



# [durham.mysocialpinpoint.com/comprehensiveplan](http://durham.mysocialpinpoint.com/comprehensiveplan)



## Draft Place Type Map

Comment on this interactive map showing place types: a way of describing and mapping the kinds of places we that we want to see in Durham

Download a PDF here

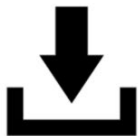
[Click here](#)



## Draft Place Type Guide

Provide feedback on the Place Type Guide: a key to understanding the map

[Learn more](#)



## Download the Resident Engagement Toolkit

Get other residents involved by using engagement tools here



[Learn more](#)

## Register for a Community Meeting

We're kicking off fall engagement by inviting residents to participate in one of six staff-led Community Meetings over the next three months. One will be held in Spanish, and the other five in English, with Spanish interpretation available. You are welcome to attend any of these meetings, as the same basic information will be shared at all meetings, with a portion of the meeting broadly focused on a general area of Durham.

Each meeting will provide information on where we are in the Comprehensive Plan process, details of the Place Type Map, and the tools for community engagement on the Map. These meetings are a great way to jump into the project!

Click on one of the meetings below to register today!

 <b>3</b> NOVEMBER	<b>Meeting 1</b> <ul style="list-style-type: none"><li>This session has already occurred and a recording has been posted here!</li></ul>	 <b>30</b> NOVEMBER	<b>Meeting 2</b> East Durham Zoom Meeting	 <b>6</b> DECEMBER	<b>Meeting 3</b> North Durham Zoom Meeting
 <b>13</b> DECEMBER	<b>Meeting 4: Spanish Session</b> Spanish Session Zoom Meeting	 <b>16</b> DECEMBER	<b>Meeting 5</b> South Durham Zoom Meeting	 <b>12</b> JANUARY	<b>Meeting 6</b> West Durham Zoom Meeting

# Policy Working Groups

- Participants include engagement ambassadors, outreach team members, folks on boards and commissions, Planning Commissioners, and City/County staff
- Kickoff meeting August 30
- Meeting monthly October - March
- Brainstorming draft policies for Spring community-wide engagement



919.560.4137

[DurhamNC.gov](http://DurhamNC.gov)

Follow Us @CityofDurhamNC



# Overall Timeline

	Summer 2021	Fall 2021	Winter 2022	Spring 2022	Summer 2022	Fall 2022	
Community Goals & Objectives							<i>Start Plan Adoption</i>
Place Type Guide		★					
Place Type Map		★					
Southeast Durham Focus Area							
Bragtown Focus Area							
Policies				★			
Community Goals and Objectives Report Card							
Implementation List							
Final Plan Draft							

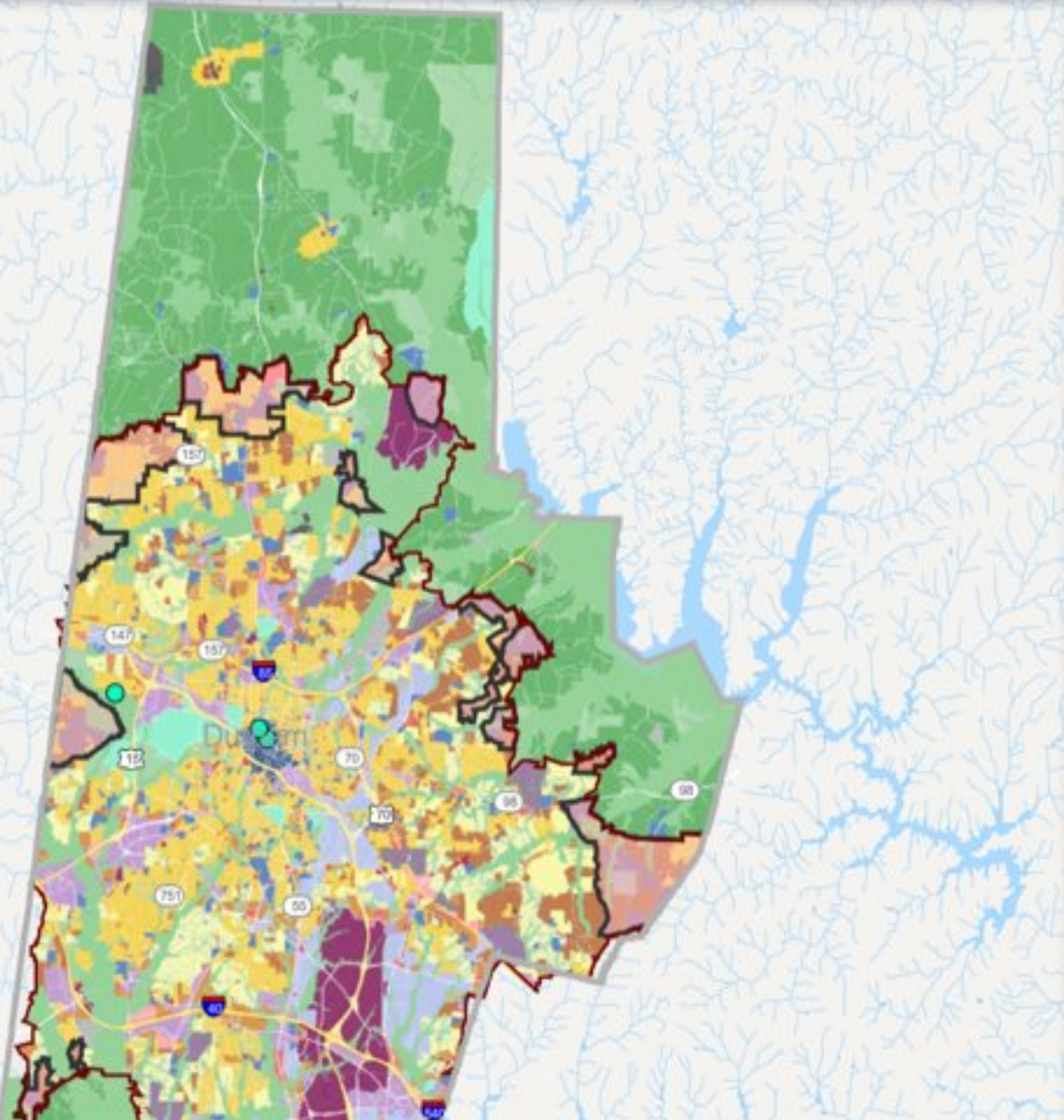


Community-wide engagement on these sections





Search by Address or Parcel



Legend / Leyenda

Urban Growth Boundary / Límite para el Crecimiento Urbano



Future Growth Areas / Áreas de Futuro Crecimiento



Place Types / Tipos de Lugar

- [\(TOA\) Transit Opportunity Area / Área de Oportunidad para el Tránsito](#)
- [\(MUN\) Mixed Use Neighborhood / Vecindarios de Uso Mixto](#)
- [\(MRN\) Mixed Residential Neighborhood / Vecindarios Residenciales Mixtos](#)
- [\(ER\) Established Residential / Residencial Establecido](#)
- [\(ATN\) Apartment and Townhouse Neighborhood / Vecindarios con Apartamentos y Casa Adosadas](#)
- [\(PN\) Planned Suburban Neighborhood / Vecindarios Planificados Suburbanos](#)
- [\(CI\) Community Institution / Institución Comunitaria](#)